



Empowering Healthy, Thriving communities through properties that perform since 1946

Expression of Interest



What our clients say...



Bunnings Warehouse

"Would I use Pluim again? Absolutely Yes!"

Michael Mahrous

State Construction Manager



NSW Dept of Public Works

"I have recommended Pluim a number of times, I will keep recommending them!"

Bill Otto

Senior Project Manager



Lederer Group

"It was a pleasure to deal with the Pluim team during a difficult project with the expectations of cost, time and quality fully met!"

Tony Stills

General Manager - Projects



NSW Dept of Public Works

"Pluim completed the works in a timely professional manner. Onsite staff were proactive and helpful in finding solutions and working closely with the school to minimize any disruption to an active site."

Andrew Hogg

Senior Project Manager



The Entertainment Grounds

"Throughout the project, Pluim kept the highest level of communication with us. The team are very knowledgeable and advised us objectively to achieve a fantastic result. I would recommend them to anyone!"

Daniel Lacey

CEO



Japara Retirement Living

"Occupancy has maxed out on the project Pluim delivered. It was delivered to such a high quality. The new Dementia ward has made a real difference in that community. Pluim has transformed that property and made it a jewel in the crown."

James Wheelock

East Coast Development Manager

Expression of Interest



PARTNERS IN PROPERTY PERFORMANCE, NOT JUST CONSTRUCTION.

Dear Property Professional,

Since 1946, Pluim has empowered Health and Wellbeing outcomes for our community, through properties that perform!

Central to Pluim' mission: to *Build communities and Sustain Lasting Legacies*, Pluim places our client's outcomes first.

We Serve you, empowering and driving high value outcomes by partnering with clients to:

Capability Statement

We see our role as serving you, empowering and driving high value outcomes by partnering with clients to:

- **Listen & Understand**
 - o The key value drivers of the business
 - o The key clients touch points of the business
 - o The key experience outcomes for our clients
- **Collaborating & Partnering with**
 - o Client-side key stakeholders
 - o Engaging like-minded Subject Mater Experts and Consultants
 - o Service Excellence Integration workshops
- **Establishing High Performance Value adds as**
 - o low cost or no cost solutions

Pluim offers a Full Life Cycle Property offer (Design, Build, Maintain) through various commercial engagement types including:

- **Early Contractor Involvement**
- **Design and Construct**
- **Construct Only**
- **Contract Management**

Pluim have demonstrated our expertise in delivering projects up to \$50m delivering high quality and an exceptional journey every time. With a world class executive team, professional management systems and focused construction experts, Pluim continues to add to our successful history of high-quality commercial project delivery, that continues to capture our keystone clients.

A list of Pluims relevant projects experience has also been provided within.

We thank you for your time and look forward to hearing from you in consideration of your project.

Please do not hesitate to contact our General Manager – Murray Slatter on 0490 965 774.

Kind regards

A handwritten signature in black ink, appearing to read "Scott Allen", written over a light blue horizontal line.

Scott Allen
Managing Director
The Pluim Group

Tender Submission

Executive Summary



In the building and construction industry, experience counts! The Pluim Group has an enviable reputation for delivering high quality commercial construction and technical fit-out projects exceeding quality, time and on budget.

Who we are

Since 1946 the Pluim Group have founded our success in thoroughly understanding our client's needs and exceeding our client's expectations.

We are delighted to have served our clients success!

Pluim is an organisation with integrity, we believe it's vital to drive and maintain trusting, honourable relationships with clients, consultants and subcontractors.

What we do

The Pluim Group provides superior property consultation and effective construction solutions by engaging the best people, engaging fit for purpose business systems, driving quality processes, governing and controlling risk.

Recent Awards

Pluim have been recognised by industry with a nomination for, and awarded winner of two prestigious awards for the Renovation and Rebuild of the Historic building owned by Muswellbrook Council – the Denman Memorial Hall

For more, about the awards click the icons below:



History & Culture

We've worked hard to learn from both our successes and our areas for improvement, to continually improve our delivery and drive our future performance.

We are defined by our mission and our value:

“building communities, sustaining lasting legacies”

To this end we take seriously our mission of ensuring that we build community, not only as the outcome of the project, but with all stakeholders in the delivery of the project.

In over 72 years we have never suffered an industrial dispute. We have an outstanding Customer Net Promotor Score and Contractor Net Promoter Score all of which is attributable to our team's expertise in building and maintaining a culture onsite that eliminates risk of delay, dispute and reputational damage.



Experience & Expertise



Pluim are experts in managing risk, health, safety, environment and quality assurance, delivering on time, within budget, exceeding quality, with no fuss.

Our Experience

As thought and delivery leaders in construction we have fine-tuned our systems, bringing forward all relevant design details to simplify delivery, maximise quality, reduce and mitigate the risk to ensure your project is delivered risk free, on time getting you into your property, up and operating!

Our Capacity

Pluim Group has a proud history of delivering every project safely without incident in the most challenging of environments. This is best demonstrated in the repeated faith that clients such as Bunnings Group, Sanitarium, NSW Public Works and others has shown in our company for projects up to \$40M.

Time after time

Pluim' client service is second to none!

Our focus is to deliver your project, mitigating risk, minimising time, empowering your business to trade earlier, maximising yield from your property, and delivering you cost savings.

We plan thoroughly! We deliver methodically!



More than words... The Pluim Zero Harm program empowers our team to care for needs of all stakeholders to ensure our works have ZERO HARM on all team members, the environment, our customers brand and Pluim' Brand.

Commitment to Health, Safety & Environment

Pluim place the highest priority on health, safety and the environment.

All staff, contractors and subcontractors have an excellent record of compliance with our Occupational Work Health & Safety Management policies and systems.

Further, Our Zero Harm program empowers our teams to drive a culture to live and breathe our genuine commitment to our goal of zero incidents.

Uniquely our Environmental Management Project planning is site specific, to meet the needs of each project, with the aim of achieving a safe environmentally sound approach to construction for that site.

Quality Assurance

Our quality assurance system is fully accredited by TQCS to AS/NZS ISO9001:2015 the international quality assurance standard. Only work that meets our strict standards will pass these inspections and immediate corrective action is taken should problems arise. Our attention to detail and technical expertise allows us to deliver a quality construction product time after time.



Project Summary



The Need

Understanding the key needs of the client is fundamental to delivering a highly optimised property solution.

Consistent with world's best practice in property development. The *needs exploration process* focuses on identifying and assessing the property needs throughout the property life cycle, *use cases* and *design life*, is typically done poorly within industry.

Foundational to our process is ensuring that we Partner with our clients to collaborate on the levers that optimise outcome, whilst minimising capital and operational costs.

Development and Delivery Options

Having understood your life cycle property needs, Pluim evaluates multiple development delivery options and critically analysed 'to one' the recommended option. Demonstrating a Bankable Feasibility against the other assessed option. This ensures that we empower our clients with a rational evaluation that is defensible under third party evaluation. Representing an achievable, reliable and efficient practical delivery methodology to deliver the smoothest and most risk mitigated option.

Identified Solutions

As our offer is to guide you through the concept development, design, approval, execution, construction to operations, Pluim have the team and the experience to work with you on every aspect of the identified solution, or part there of as you require.

Proposed Process

Standard to the Pluim process, although flexible to accommodate our client's specific needs is:

- Concept Design
- Bankable Feasibility Study
- Development Application
- Detailed Design and Engineering
- Execution Management
 - Procurement
 - Site management/Control
 - Construction and contractor Management
 - Scope and Quality control
 - Cost and Schedule control
 - Operational Planning
 - Closeout & DLP control
 - Operational Readiness
 - Fitout, Churn, Training and Settling in Management
- Facilities Management and Maintenance

Foundational to our process is ensuring that we Partner with our customers to collaborate on the levers that optimise outcome, whilst minimising capital AND operational costs.

The Outcome

Pluim are your perfect partner to conceive, define, design, develop, execute and operate a property with. To ensure that we deliver an optimised quality solution, delivering the highest operational satisfaction at the lowest capital cost with the lowest operational overhead.



Previous [Experience](#)

Japara Retirement Living

South West Rocks, NSW



Project Details

Year	2019
Location	Southwest Rocks, NSW
Client	Japara Aged Care
Description	This project involved the Refurbishment, Repurposing, alterations and additions of existing spaces into an acute dementia ward, including upgrades/remodelling of the commercial kitchen, security systems, Hospice space, .
Contract Type	Design & Construct
Relevancy	Ability to work in an occupied operating environment with replacement
Contract Value	~\$1 Million
Contract Duration	3 Months
Risks and Challenges	<ul style="list-style-type: none">- Operating school site environment with multiple stakeholders- Replacement of existing roof structure
Innovation/Value Add	Efficient Structural Design
Referee Contact	James Wheellock – East Coast Development Manager Japara Aged Care



Evergreen Life Care

Gosford, NSW



Project Details

Year	2020
Location	West Gosford, NSW
Client	Evergreen Life Care
Description	Full Electrical System upgrade and associated construction works, including Hospice care fitout, Mains distribution boards upgrades, lift installation
Contract Type	Design & Construct
Relevancy	Ability to work in critical care, occupied operating environment during COVID to upgraded hygiene and vaccine requirements
Contract Value	~\$1 million
Contract Duration	3 Months
Risks and Challenges	<ul style="list-style-type: none">- Operating aged care environment with multiple stakeholders- COVID
Innovation/Value Add	Coordination risk management
Referee Contact	Steve Kane – Manager Evergreen Life Care



Evergreen Life Care

Gosford, NSW



Project Details

Year	2021
Location	West Gosford, NSW
Client	Evergreen Life Care
Description	Full kitchen renovation, refit, upgrade and commissioning, including provision of temporary Kitchen facilities, demolition of existing facilities, Cold stores, Staff facilities, Staff mess, way finding and external works.
Contract Type	Design & Construct
Relevancy	Ability to work in critical care, occupied operating environment during COVID to upgraded hygiene and vaccine requirements
Contract Value	~\$1 million
Contract Duration	3 Months
Risks and Challenges	- Operating aged care environment with multiple stakeholders - COVID
Innovation/Value Add	Coordination risk management
Referee Contact	Steve Kane – Manager Evergreen Life Care



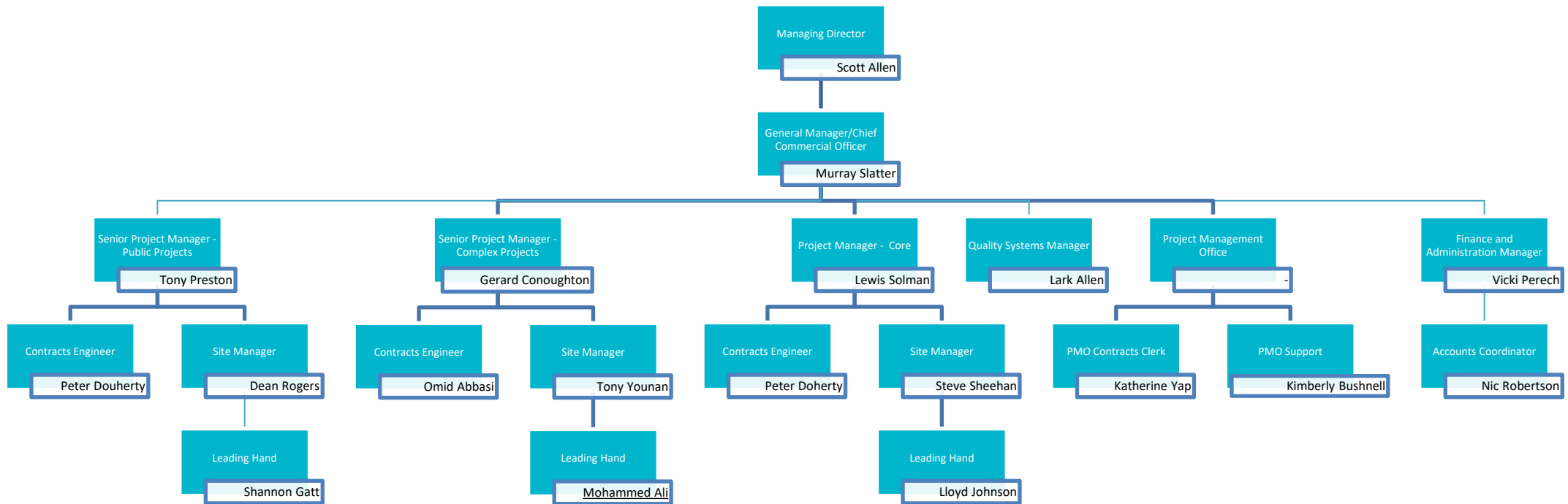
Expression of Interest



Key Personnel

Expression of Interest

Pluim Organisation Structure



Expression of Interest



Scott Allen

Managing Director

Memberships

Master Builders Association
Property Council of Australia
West Gosford Rotary Club
Ski Snowboard Australia

Professional Experience

Director of Pluim Commercial Contractors Carpentry, Estimating and Project Management	1999 - Current
Construction Manager, Pluim Constructions	2005 - 2012
Pluim Constructions Carpenter Full Time	(1997-1999)

Education

NSW Public Works GC 21	Contract Training
Property Development Diploma	2007, PCA
Accredited Green Building Professional Building Diploma	2007, GBC
Building Certificate	2003, Hornsby TAFE
Central Coast Grammar School	1995-1996
Seventh Day Adventist School Erina	1983-1994

Completed Projects

Bunnings Warehouse Lake Haven	\$28M
Bunnings East Gardens	\$26M
Bunnings Tuggerah Expansion	\$10M
Bunnings West Gosford	\$15M
Peppers Pier Resort Hervey Bay	\$54M
Gosford Primary School Relocation	\$3M
Central Coast Adventist School Sports Stadium	\$4.8M
Central Coast Adventist School Language, Performing Arts & Technics Building	\$5.2M
Central Coast Adventist School 3 storey classroom block	\$3M
Sylvania Lighting Australasia	\$3M
Sanitarium Water Infrastructure Upgrade	\$1M
Program Manager of Pluims Portfolio since 1996	\$300m

Expression of Interest



Murray Slatter MPM MAICD MAIPM RegPM CPPD

General Manager

Contact Details

Landline: 02 4324 7588
Mobile: 0490 965 774
Email: murray@pluim.com

Memberships

Australian Company Directors
 Australian Institute of Project Management
 Alumni Sydney University
 Alumni New South Wales University
 Alumni Australian Graduate School
 Management
 International Project Management Assoc.

Accreditations

Cert. Practicing Program Director (AIPM)

Awards

Citibank Partner of the Year 2018
 Hon. Mention British Parliament 2017
 HPE Regional Excellence Awards 2017

Professional Experience

General Manager - Pluim	2018 - Current
Global Director Projects – ISS A/S	2015 - 2018
CEO - Mestelle	2010-2015
Group Executive GM – Mayer International	2006-2010
Project Director – Mayer International	2006-2006
Snr Project Manager – SNP	2003-2006
Project Manager – Network Ten	1999-2003
Project Engineer – Nine Network Australia	1994-1999

Education

Master of Finance (AGSM)	2020-Current
Master of Business Administration (AGSM)	2019-Current
Master of Project Management (USYD)	2006
Bachelor of Engineering	2003
Adv Dip Engineering Technology	1999

Projects and Portfolios Executed/Governed

Bunnings Warehouse Lake Haven	\$28M
British Embassy Tokyo	\$35M
British Embassy Canberra	\$28M
British Embassy Wellington	\$18M
British Embassy Singapore	\$7M
British Embassy China	\$32M
British Embassy Hong Kong	\$8M
British Embassy Bankok	\$28M
Portfolio of Nestle Projects	\$108M
Portfolio of Novartis Projects	\$76M
Portfolio of Shire Projects	\$28M
Portfolio of HPE Projects	\$145M
Portfolio of HP Projects	\$175M
Portfolio of DXC Projects	\$175M
Portfolio of Citibank Projects	\$214M
Portfolio of Barclays Projects	\$194M
Portfolio of Mercedes Benz	\$34M
Portfolio of Goodman	\$35M
Portfolio of Glencore Projects	\$95M
Portfolio of Xstrata Projects	\$175M
Portfolio of BHPIO Projects	\$145M
Portfolio of RTIO Projects	\$175M
Portfolio of BHPC Projects	\$65M
Portfolio of African Mining Limited	\$35M
Portfolio of Fujitsu Projects	\$105M
Portfolio of NSW Schools Projects	\$215M
Portfolio of NSW RTA Projects	\$75M
Portfolio of Astrazenica Projects	\$35M
Portfolio of Shenhua Projects	\$25M

Expression of Interest



Peter Dooley

Senior Project Manager
Program Lead

Contact Details

Landline: 02 4324 7588
Mobile: 0456 635 549
Email: peter.dooley@pluim.com

Professional Experience

PLUIM – SENIOR PROJECT MANAGER	2021—CURRENT
WILLIAMS RIVER STEEL – PROJECT MANAGER	2020 – 2021
CENTRAL CONSTRUCT – SENIOR PROJECT MANAGER	2019 – 2020
SONEVA MALDIVES – PROJECTS DIRECTOR	2018 – 2019
MACE INTERNATIONAL	2007 – 2018
MGM RESORTS - CONSTRUCTION DIRECTOR (MACAU)	
CITY GARDEN - SENIOR CONSTRUCTION DIRECTOR (VIETNAM)	
MARINA BAY SANDS – SENIOR CONSTRUCTION MANAGER (SINGAPORE)	
SKANSKA POLAND – SENIOR CONSTRUCTION MANAGER	2004 – 2006
IDC– SENIOR PROJECT MANAGER	2002 – 2004
CHATER HOUSE, ARCHITECTURAL MANAGER	2001 – 2002
SHANGHAI CIRO’S PLAZA – PROJECT MANAGER	1999 – 2001
CLK AIRPORT HONG KONG – CONSTRUCTION MANAGER	1998 – 1999
SHERATON HOTEL, VIETNAM – PROJECT MANAGER	1997 – 1998
BARCLAY/ MOWLEM– BUILDING MANAGER	1996 – 1997
JONES HOMES – CONSTRUCTION MANAGER	1992 – 1996
SELF EMPLOYED LICENCED BUILDER	1990 – 1992
WORLD SQUARE – GENERAL FOREMAN	1989 – 1990
AW EDWARDS – GENERAL FOREMAN	1984 – 1989

Qualifications, Certificates and Licences

MASTER BUILDING LICENSE: MASTER BUILDERS ASSOCIATION OF NSW
BUILDING DIPLOMA. BUILDING: UNIVERSITY OF WESTERN SYDNEY
TRADE CERTIFICATE- SHOP FITTING AND JOINERY: GRANVILLE TAFE
CONTRACT REVIEW AND REVISION - DPIC COMPANY INC.
PROFESSIONAL LIABILITY EDUCATION PROGRAM - DPIC COMPANY INC.
IQ FOR ARCHITECT AND ENGINEER LIABILITY - DPIC COMPANY INC.
SMALL BUSINESS MANAGEMENT COURSE
DIR EXPLOSIVE POWER TOOL LICENSE
DIR FORMWORK CERTIFICATE
ST JOHN AMBULANCE FIRST AIDS CERTIFICATE.

Projects and Portfolios Executed/Governed

CESSNOCK BULK RETAIL	\$5M
NEWCASTLE HOTEL	\$8M
PENINSULA APARTMENT	\$52M
SONEVA MALDIVES	\$
MGM RESORTS - CONSTRUCTION DIRECTOR (MACAU)	\$3.2BN
CITY GARDEN - SENIOR CONSTRUCTION DIRECTOR	\$400M
MARINA BAY SANDS – SENIOR CONSTRUCTION MANAGER	\$ 6.7BN
SKANSKA POLAND – SENIOR CONSTRUCTION MANAGER	\$200M
IDC– SENIOR PROJECT MANAGER	\$100M
CHATER HOUSE, ARCHITECTURAL MANAGER	\$154M
SHANGHAI CIRO’S PLAZA – PROJECT MANAGER	\$90M
CLK AIRPORT HONG KONG – CONSTRUCTION MANAGER	\$3.2BN
SHERATON HOTEL, VIETNAM – PROJECT MANAGER	\$80M
BARCLAY/ MOWLEM– BUILDING MANAGER	\$80M

Expression of Interest



Lewis Solman

PROJECT MANAGER
PROGRAM LEAD

Contact Details

Landline: 02 4324 7588
Mobile: 0458 004 395
Email: lewis@pluim.com

Professional Experience

Project Manager - Pluim	2014 - Current
McNab Constructions- Contracts Administrator	2013 – 2014
National Buildplan Group- Contracts Administrator	2012-2013
Richard Crookes- Construction Cadet	2011-2012
Cadman Consultant Surveyors- Surveyors Assistant	2011
Hotondo Homes- Labourer	2011

Education

Bachelor of Construction Management- UoN2012

Projects

Adcock Park	\$5M
Lakes Ev	\$5M
Cessnock Plaza	\$6M
Denman Memorial Hall	\$2.6M
Bunnings Albion Park	\$3.1M
Bunnings Gregory Hills	\$2.7M
Bunnings East Gardens	\$27M
Belrose Supacentre	\$4.5M
Tuggerah Supacentre	\$9.6M
Muswellbrook TEC	\$5.5M
Imperial Centre Gosford	\$13m
Gosford Race Club	\$3.5m
Bunnings Tuggerah	\$11m
Roma 02 Compressor Hub	\$6.5m
GS Kidd Memorial School New Facilities, Gunnedah	\$5.5m
Tamworth City Plaza	\$1m
Tamworth Cancer Centre	\$17m
ELF Singleton Stage 1	\$32.5m

Expression of Interest



Lloyd Shephard

Project Manager
Program Lead

Contact Details

Landline: 02 4324 7588
Mobile: 0401 275 454
Email: lloydshepherd@pluim.com

Professional Experience

Pluim - Site Manager	2020 – Current
Clifford Constructions	2019 - 2029
Cassin & Sons	2016 – 2019
Forum Group	2014 – 2014
Shepherd Constructions	2008 – 2014
Cassin & Sons	2004 - 2008

Education

Diploma of Building & Construction	2017
First Aid Certificate September	2016
Certificate III Carpentry & Joinery	2006
Green Card Safety Training	

Completed Projects

Campbelltown Bunnings	\$34m
Mittagong Bunnings	\$10m
Greenacre Bunnings	\$1m
Program of KFC'	\$14m

Expression of Interest



Kees van der Wallen

Senior Estimator
Program Lead

Professional Experience

Pluim – Senior Estimator 2020 – Current
Westfield Design and Construct 1995-2020

Education

Bachelor of Construction Management - UTS 1995

Completed Projects

Vmax & Gold Class Cinema Extension - Tuggerah	\$8m
Rebel and H&M – Tuggerah	\$6m
Car Park Upgrades & Ticketless Parking - Woden	\$6m
Car Park Upgrades & Ticketless Parking - Liverpool	\$7m
Car Park Upgrades & Ticketless Parking - Mt Druitt	\$10m
Car Park Upgrades & Ticketless Parking Geelong	\$6m
MyCar Tyre & Auto – Tuggerah	\$2m
Downsize 2 level David Jones to single level	
Kmart & single level David Jones	\$25m
Aldi Expansion	\$2m
Warringah Mall Extension & Upgrade	\$230m
Brookvale Creek Restoration & Drainage Culverts	\$70m
Macquarie Centre Extension & Refurbishment	\$350m
Westfield Sydney Re-Build - 85 Castlereagh St	\$350m
Westfield Sydney Re-Build - 100Market St	\$350m
Kotara Shopping Centre Re-Development	\$170m
Tuggerah 2nd Level Extension	\$80m
Bondi Junction Re-Development	\$450m
Hornsby Shopping Centre Re-Development	\$300m

Expression of Interest



Lark Allen

Change and Systems
Program Lead

Professional Experience

Pluim – Change and Systems Lead	2016 – Current
Sanitarium - Quality Manager	2013 - 2016
EMC Global (Dell) – Operations Manager	2001 – 2013

Education

Bach. Science (Newcastle)	1999
---------------------------	------

Completed Projects

Campbelltown Bunnings	\$34m
Marina Apartments	\$16m
Icon Apartments	\$19m
Aqua Apartments	\$14m
Civic Green Apartments	\$8m
Capri Apartments	\$10m
Woolworths Wadalba	\$3.4m

Professional Development

Vulnerability Workshop	2016
Allergen Management	2014
HACCP hazard analysis critical control point	2013
Management Systems auditor/Lead Auditor	2013
Leadership Development	
Interviewer & Conflict Resolution	2008
Green Belt Six Sigma	2007
Certificate IV Business (Frontline Management)	2005
Project Management fundamentals	2004

Expression of Interest



Professional Experience

Pluim

1985 – Current

Education

Diploma of Business Administration

Professional Development

Board Member – Pluim Group

Board Member – Gosford Lions Club

Board Member – NSW Business Chamber – Central Coast

Vicki Perich

People, Culture and Wellbeing
Program Lead

Expression of Interest



Alex Mitchell

Contracts Engineer

Professional Experience

Pluim - Site Manager	2020 – Current
Builtsmart Group	2019 - 2020
Central Real	2016 – 2018
Empire Facades	2015 – 2016
National Buildplan Group	2013 – 2015
Ausco	2011 - 2013
Baxter O'Hara Building	2010 - 2011

Education

Bachelor of Construction Management (Newcastle University, NSW)
Cert IV OHSE (National Safety Council of Australia)
Cert IV Leadership & Management
S1, S2, S3 Supervisors Course Certificate

Completed Projects

Western Sydney Wanderers	\$1.3m
Booker Bay Duplex Residential Development	\$650k
Hat Head	\$450k
Narara Ecovillage Residence	\$400k
SCENIC Luxury apartments	\$18m
ICON Luxury apartments	\$23m
200 George St, Sydney	\$6.5m
St Patricks Green, Kogarah	\$3m
Gulgong Hospital	\$5.3m
St Cecilia's Catholic School Hall	\$2.5m
Kincumber Fire Station	\$1.5m
Penshurst Aged/Disability care units	\$1.5m
Wadalba Aged/Disability care units	\$1.0m
Wyoming Aged/Disability care units	\$1.0m

Professional Development

2016 ISO9001:2015 Awareness Course
2016 ISO14001:2015 Awareness Course
2020 Conflict Resolution / Alternate Dispute Resolution
Apply First Aid
Safe Working at Heights
Work Activity – OH&S Supervision
General Induction (OHS)
Workcover General Induction

Expression of Interest



Ken Chin

Contracts Engineer

Professional Experience

Pluim – Snr Contracts Engineer	2020-Current
Central Construct – Snr Project Engineer	2019-2019
Icon Co – Snr Project Engineer	2017-2019
Lend Lease Building Pty Ltd – Snr Project Engineer	2004-2017
Leighton Contractors Pty Ltd – Snr Project Engineer	2003-2003
Barclay Mowlem Construction – Snr Project Engineer	2002-2003
Fletcher Construction Australia – Snr Project Engineer	2001-2002
Leighton Contractors – Project Engineer	1995-2000
Multiplex Constructions – Building Foreman	1989-1995

Education

Bachelor of Building University of New South Wales	1995
----------------------------------------------------	------

Completed Projects

Adcock Park	\$5m
Umina Mall	\$10m
Medical Centre Tuggerah	\$5m
Bunnings Mittagong	\$9m
Residential Tower at Point Frederick	\$50m
Workshop Pyrmont	\$80m
Gosford Hospital Redevelopment	\$215m
Silk Project at Jacksons Landing	\$70m
Charlestown Square Shopping Centre Redevelopment	\$400m
Innovation Place Project North Sydney	\$80m
Darling Park, Stage 3 Darling Harbour	\$110m
126 Phillip Street, Sydney	\$120m
Sydney Hilton Project	\$130m
Waterfront Project, Homebush Bay – Residential Tower	\$72m
Global Switch Sydney Refurbishment	\$140m
Angel Place, Commercial Tower	\$180m
Sydney Harbour Casino Project	\$700m
Lane Hotel Tattersall Building	\$300m

Expression of Interest



Professional Experience

Pluim – Procurement Manager	2020-Current
ISS A/S – Project Manager	2018-2019
ISS A/S – Project Coordinator	2017-2017
Embassy of Switzerland, Project Coordinator	2016-2016
Sales Manager - Hyatt Jakarta	2012-2015
Sales Manager - Hyatt Chicago	2011-2012
Sales - Hotel Aryaduta Medan,	2009-2010

Education

Master of Global Project Management	Torrens University Australia
Bachelors of Arts – Event Management	Kendall College Chicago
Diploma in Hotel Management	Swiss Hotel Management
Diploma of Business and Public Relations	Swiss Hotel Management

Katherine Yap

Procurement

Expression of Interest



Dean Rogers

Construction Manager

Achievements

2008 – Runner Up for Renovations or Additions

Under \$250,000 MBA

2002 – First Place for New Homes under

\$250,000 MBA

2010 – First Place for Commercial Buildings

\$10,000,000 MBA

Professional Experience

Pluim Commercial Contractors, Site Manager	2013 – current
Lahey Constructions, Site Manager	2009 – 2013
Dean Rogers Constructions Pty Ltd – Director	1992 – 2009
Institute of TAFE – Carpentry and Joinery Teacher	2000 – 2002
Kendale Constructions Pty Ltd – Carpenter & Joinery	1990 – 1992
Kendale Constructions Pty Ltd – Apprentice Carpenter	1988 – 1990

Education

Contractor Licence – Qualified Builder – 72916C
Diploma of Building and Construction
Certificate IV in Assessment & Workplace Training
Certificate in Building Supervision
Carpentry and Joinery Trades Course

Completed Projects

Bunnings Lakehaven	\$28M
Bunnings Tuggerah	\$10m
Bunnings West Gosford	\$13.8m
St Edwards College, East Gosford	\$2.4m
Greenacre Baptist School	\$1.3m
Raymond Terrace Police Station	\$12.2m
Blacktown Police Station	\$1.8m
Gosford Mental Health Unit	\$11.3m
Southern Cross Nursing Home	\$5.4m
Patrician Brothers Monastery, Ryde	\$2.2m
X-Ray Clinics, Mona Vale, Dee Why and Manly	\$4.5m
Wyong Baptist Church	\$3.4m

Professional Development

2016 ISO9001:2015 Awareness Course
2016 ISO14001:2015 Awareness Course
2016 Conflict Resolution / Alternate Dispute Resolution
Apply First Aid
First Attack Fire Fighting
Safe Working at Heights
Work Activity – OH&S Supervision
General Induction (OHS)
2005 Workcover General Induction
Associate Member, Australian Institute of Project Management
Accredited Green Star Professional (Design & As-Built)

Expression of Interest



Steve Sheehan

Site Manager

Professional Experience

Pluim - Site Manager	2000 – Current
Pluim - Leading Hand	1990 – 2000
Pluim - Apprentice	1986 – 1990

Education

Diploma of Building and Construction
Certificate IV in Assessment & Workplace Training
Certificate in Building Supervision
Carpentry and Joinery Trades Course

Completed Projects

Adcock Park	\$5M
Lakes Ev	\$5M
Cessnock Plaza	\$6M
Denman Memorial Hall	\$2.6M
Bunnings Albion Park	\$3.1M
Bunnings Gregory Hills	\$2.7M
Bunnings East Gardens	\$27M
Belrose Super Centre Expansion	\$4.5M
Bunnings Tuggerah	\$10m
Bunnings West Gosford	\$13.8m
St Edwards College, East Gosford	\$2.4m
Greenacre Baptist School	\$1.3m
Blacktown Police Station	\$1.8m
Gosford Mental Health Unit	\$11.3m
Southern Cross Nursing Home	\$5.4m
Patrician Brothers Monastery, Ryde	\$2.2m
X-Ray Clinics, Mona Vale, Dee Why and Manly	\$4.5m
Wyong Baptist Church	\$3.4m

Professional Development

2016 ISO9001:2015 Awareness Course
2016 ISO14001:2015 Awareness Course
2016 Conflict Resolution / Alternate Dispute Resolution
Apply First Aid
Safe Working at Heights
Work Activity – OH&S Supervision
General Induction (OHS)
2005 Workcover General Induction

Expression of Interest



Shannon Gatt

Site Supervisor

Professional Experience

Pluim - Site Manager	2016 – 2019
Pluim - Leading Hand	2009 – 2016
Pluim - Apprentice	2003 – 2008
Pluim - Labourer	2001 – 2003

Education

Diploma of Building and Construction
Certificate IV in Assessment & Workplace Training
Certificate in Building Supervision
Carpentry and Joinery Trades Course

Completed Projects

Belrose Super Centre Expansion	\$4.5M
Bunnings Tuggerah	\$10m
Bunnings West Gosford	\$13.8m
St Edwards College, East Gosford	\$2.4m
Greenacre Baptist School	\$1.3m
Raymond Terrace Police Station	\$12.2m
Blacktown Police Station	\$1.8m
Gosford Mental Health Unit	\$11.3m
Southern Cross Nursing Home	\$5.4m
Patrician Brothers Monastery, Ryde	\$2.2m
X-Ray Clinics, Mona Vale, Dee Why and Manly	\$4.5m
Wyong Baptist Church	\$3.4m

Professional Development

2016 ISO9001:2015 Awareness Course
2016 ISO14001:2015 Awareness Course
2016 Conflict Resolution / Alternate Dispute Resolution
Apply First Aid
Safe Working at Heights
Work Activity – OH&S Supervision
General Induction (OHS)
2005 Workcover General Induction

Expression of Interest



Mo Ali

General Foreman

Professional Experience

Plum Commercial Contractors, Site Manager	2019 – current
Sodexo, BHP Mine Olympic Dam	2017-2019
Great Northern Lodge, Quorn	2016-2017
ADCO Constructions	2012-2016
Betta Form	2002-2012
Trebor Building Group	1998-2002

Education

Certificate IV in Building
Certificate in Carpentry

Completed Projects

Bunnings Campbelltown	\$36M
Multiple projects - BHP Mine Olympic Dam	\$30m
Great Northern Lodge, Quorn	\$10m
Bunnings, Blacktown NSW	\$25m
TAFE Building	\$12m
Ministers Offices, Multi-level Office Refurbishment	\$25m
Pavilion Refurbishment in Homebush, NSW	\$9m

Professional Development

2018 ISO9001:2015 Awareness Course
2012 ISO14001:2015 Awareness Course
2020 Conflict Resolution / Alternate Dispute Resolution
Apply First Aid
Safe Working at Heights
Work Activity – OH&S Supervision
General Induction (OHS)
2005 Workcover General Induction

Expression of Interest



Adam Cooper

Site Manager

Professional Experience

Pluim - Site Manager	2020 – Current
Central Construct	2018 - 2020
Richard Crookes Constructions	2016 – 2018
ATC Construction Group	2012 – 2016
Timber Built Constructions	2006 – 2012
CEMFORM CIVIL M7 PROJECTS	2004 - 2005

Education

Diploma of Building and Construction
Certificate IV in Assessment & Workplace Training
Diploma of Business and Public Relations
Carpentry and Joinery Trades Course

Completed Projects

Campbelltown Bunnings	\$34m
Marina Apartments	\$16m
Icon Apartments	\$19m
Aqua Apartments	\$14m
Civic Green Apartments	\$8m
Capri Apartments	\$10m
Woolworths Wadalba	\$3.4m

Professional Development

2016 ISO9001:2015 Awareness Course
2016 ISO14001:2015 Awareness Course
2020 Conflict Resolution / Alternate Dispute Resolution
Apply First Aid
Safe Working at Heights
Work Activity – OH&S Supervision
General Induction (OHS)
2005 Workcover General Induction

Expression of Interest



Accreditations

Expression of Interest

Assurances & Security

The three ticks of a certified organisation



Safety Management System

Certifier
TQCSI Group

Compliance with
ISO 45000:2018

Registration Number
AU1264-QC-EC-SC

Expiry Date
11th September 2023



Quality Management System

Certifier
TQCSI Group

Compliance with
ISO9001:2015

Registration Number
AU1264-QC-EC-SC

Expiry Date
11th September 2023



Environment Management System

Certifier
TQCSI Group

Compliance with
AS/NZS 4801:2001

Registration Number
AU1264-QC-EC-SC

Expiry Date
1st March 2021

Auditing Guidelines

Certifier
Sustainable Certification

Compliance with
NSW Government WHSMS
Auditing Guidelines

Certificate Number
2016-4419

Expiry Date
10th July 2022

CCU Audit Letter of Compliance

Author
Janina Veri

Compliance with
Construction Compliance Unit
Auditing Guidelines

Certificate Number
Project No. 1362

Post Date
4th June 2018

Expression of Interest



Annexure One

Expression of Interest

Since 1946, Plum' have been cemented into our nation's history, the following table summarizes the projects that Plum' have completed over the last **20 years**. In all the Plum Group have Executed ~370 over the past **20 years**.

Projects Relevant to this EOI:

HEALTH & WELLBEING

SECTOR	PROJECT NAME
AGED CARE	ADVENTIST AGED CARE DINNING HALL– NORMANHURST
AGED CARE	CHARLES HARRISON NURSING HOME
AGED CARE	SOUTHERN CROSS CHAPEL EXTENSION - BATEAU BAY
AGED CARE	ADVENTIST RETIREMENT VILLAGE 20 ILU HOUSES/30 UNIT
AGED CARE	ALTON VILLAGE - 50 BED RETIREMENT VILLAGE (EXTENSI
AGED CARE	AVONDALE RETIREMENT VILLAGE
AGED CARE	CALOUNDRA ADVENTIST RETIREMENT VILLAGE 48 BED FRAI
AGED CARE	CAPRICORNA ADVENTIST RETIREMENT VILLAGE 36 BED HOS
AGED CARE	KARA HOSTEL & NURSING HOME UPGRADING
AGED CARE	NAREEN GARDENS 60 BED AGED CARE FACILITY
AGED CARE	NAREEN GARDENS 90 BED HOSTEL & 50 BED NURSING HOME
AGED CARE	NAREEN GARDENS HOSTEL & HOSPITAL STAGE 2
AGED CARE	NAREEN GARDENS MINOR INTERIOR ALTERATIONS
AGED CARE	ORANA VILLAGE 52 BED HOSTEL & 48 BED NURSING HOME
AGED CARE	JAPARA AGED CARE REFURBISHMENT – SOUTH WEST ROCKS
AGED CARE	ELIZABETH LODGE NURSING HOME
AGED CARE	CESSNOCK HOSTEL FOR HANDICAPPED STAGE 1
HEALTHCARE	FITOUT - DEE WHY RADIOLOGY FITOUT
HEALTHCARE	FITOUT - ADAMSTOWN PATHOLOGY CENTRE FITOUT
HEALTHCARE	FITOUT - BRISBANE WATER PRIVATE HOSPITAL
HEALTHCARE	FITOUT - CANBERRA RADIOLOGY CENTRE FITOUT
HEALTHCARE	FITOUT - CASTLE HILL RADIOLOGY CENTRE FITOUT
HEALTHCARE	FITOUT - CENTRAL COAST RADIOLOGY – ERINA FITOUT
HEALTHCARE	FITOUT - CENTRAL COAST RADIOLOGY – TOUKLEY FITOUT
HEALTHCARE	FITOUT - CENTRAL COAST RADIOLOGY – LONG JETTY FITOUT
HEALTHCARE	FITOUT - CENTRAL COAST RADIOLOGY – FOUNTAIN PLAZA FITOUT
HEALTHCARE	FITOUT - GOSFORD NUCLEAR MEDICINE CENTRE FITOUT
HEALTHCARE	FITOUT - GOSFORD PATHOLOGY CENTRE FITOUT
HEALTHCARE	FITOUT - HORNSBY RADIOLOGY CENTRE FITOUT
HEALTHCARE	FITOUT - LAKE MACQUARIE MEDICAL CENTRE FITOUT
HEALTHCARE	FITOUT - MEDICAL CENTRE – TOUKLEY FITOUT
HEALTHCARE	FITOUT - MEDICAL CENTRE – WYONG FITOUT
HEALTHCARE	FITOUT - MEDICAL CENTRE – GOSFORD FITOUT
HEALTHCARE	FITOUT - RYDE/EASTWOOD MEDICAL CENTRE FITOUT
CHURCHES	CATHOLIC CHURCH - WYONG
CHURCHES	THE LAKES EVANGELICAL CHURCH
CHURCHES	ACA ADDITIONS TO EXISTING PREMISES - WAHOONGA
CHURCHES	ACA EXTENSIONS TO OFFICE BUILDING – WAHOONGA
CHURCHES	ACA WAREHOUSE & RELIEF AGENCY - WAHOONGA
CHURCHES	ACA ADDITIONS TO OFFICE BUILDING – WAHOONGA
CHURCHES	AVONDALE CHURCH ADMINISTRATION – COORANBONG
CHURCHES	SEVENTH DAY ADVENTIST OFFICE FITOUT – EPPING
CHURCHES	SDA CHURCH – FORRESTERS BEACH
CHURCHES	SOUTH PACIFIC HEADQUARTERS OF SEVENTH DAY ADVENTIST
CHURCHES	TRANS TASMAN UNION CONFERENCE OF SDA OFFICES
CHURCHES	WALLSEND CONFERENCE OFFICES & CHAPEL

Expression of Interest

More broadly the following project list details those project that we have delivered throughout NSW over the last 20 years.

SECTOR	PROJECT NAME
BANKING	ANZ BANK - TAMWORTH
BANKING	ANZ BANK - TAMWORTH (SUBSEQUENT FITOUT)
BANKING	ANZ BANK - LAURIETON
BANKING	ANZ BANK - BYRON BAY
BANKING	COMMONWEALTH BANK - SCONE
BANKING	COMMONWEALTH BANK - WOY WOY
BANKING	NATIONAL AUSTRALIA BANK - WAHROONGA
BANKING	NATIONAL AUSTRALIA BANK - WYONG
BANKING	ST GEORGE BUILDING SOCIETY - GOSFORD
BANKING	STATE BANK - JESMOND
BANKING	STATE BANK - TOUKLEY
BANKING	STATE BANK - WOY WOY
BANKING	ST GEORGE BANK REMEDIAL WORKS
BANKING	STATE BANK REMEDIAL WORKS
CHURCHES	THE LAKES EVANGELICAL CHURCH
CHURCHES	ACA ADDITIONS TO EXISTING PREMISES - WAHOONGA
CHURCHES	ACA EXTENSIONS TO OFFICE BUILDING – WAHOONGA
CHURCHES	ACA WAREHOUSE & RELIEF AGENCY - WAHOONGA
CHURCHES	ACA ADDITIONS TO OFFICE BUILDING – WAHOONGA
CHURCHES	AVONDALE CHURCH ADMINISTRATION – COORANBONG
CHURCHES	SEVENTH DAY ADVENTIST OFFICE FITOUT – EPPING
CHURCHES	SDA CHURCH – FORRESTERS BEACH
CHURCHES	SOUTH PACIFIC HEADQUARTERS OF SEVENTH DAY ADVENTIST
CHURCHES	TRANS TASMAN UNION CONFERENCE OF SDA OFFICES
CHURCHES	WALLSEND CONFERENCE OFFICES & CHAPEL
CHURCHES	CATHOLIC CHURCH - WYONG
CLUBS	AQUATIC CLUB - MAJOR EXTENSION
CLUBS	ETTALONG MEMORIAL BOWLING CLUB ALTERATIONS
CLUBS	ETTALONG MEMORIAL BOWLING CLUB STAGE 2
CLUBS	EVERGLADES COUNTRY CLUB REFURBISHMENT & EXTENSIONS
CLUBS	WOY WOY & DISTRICT WAR MEMORIAL CLUB
CLUBS	GOSFORD BOWLING CLUB
CLUBS	GOSFORD RSL CLUB - STAGE 2
CLUBS	GOSFORD RSL LEISURE LIVING - MAINTENANCE BUILDING
CLUBS	GOSFORD RSL LEISURE LIVING - STAGE 1B
CLUBS	GOSFORD RSL LEISURE LIVING - STAGE 2B
CLUBS	GOSFORD RSL LEISURE LIVING - STAGE 3
CLUBS	ORIGINAL MINGARA CLUB - STAGE 2
CLUBS	SINGLETON BOWLING CLUB EXTENSIONS
CLUBS	SWANSEA RSL CLUB ALTERATIONS & ADDITIONS
CLUBS	TAMWORTH WORKERS CLUB
CLUBS	TUGGERAH LAKES GOLF CLUB
CLUBS	TURRAMURRA BOWLING CLUB ADDITIONS & REFURBISHMENT
CLUBS	UMINA BEACH BOWLING CLUB
CLUBS	WOY WOY BOWLING CLUB
CLUBS	WOY WOY BOWLING CLUB REFURBISHMENT & EXTENSIONS
CLUBS	WYONG GOLF CLUB
EDUCATION	CATHOLIC GIRLS' HIGH SCHOOL
EDUCATION	CENTRAL COAST ADVENTIST SCHOOL – STAGE 6
EDUCATION	CENTRAL COAST ADVENTIST SCHOOL - STAGE 7
EDUCATION	CENTRAL COAST ADVENTIST SCHOOL - STAGE 7A
EDUCATION	CENTRAL COAST ADVENTIST SCHOOL - STAGE 8 AND 8.1
EDUCATION	CENTRAL COAST GROUP TRAINING – TUGGERAH
EDUCATION	DOONSIDE SEVENTH DAY ADVENTIST SCHOOL ADMIN
EDUCATION	CHRISTIAN BROTHERS BOYS SCHOOL – STAGE 1
EDUCATION	GOSFORD CHRISTIAN COMMUNITY CENTRE
EDUCATION	GREENACRE CHRISTIAN COMMUNITY SCHOOL LIBRARY
EDUCATION	GREENPOINT BAPTIST CHRISTIAN SCHOOL

Expression of Interest

EDUCATION	NEWCASTLE UNIVERSITY CENTRAL COAST ADMINISTRATION
EDUCATION	OUR LADY OF THE ROSARY
EDUCATION	ST JOHN THE BAPTIST SCHOOL
EDUCATION	ET AUST TRAINING ROOM
EDUCATION	SEVENTH DAY ADVENTIST CHURCH
EDUCATION	ST JAMES ANGLICAN CHURCH
EDUCATION	ST JOHN THE BAPTIST PRIMARY STAFF & ADMIN BLOCK
EDUCATION	ST PATRICKS CONVENT SCHOOL – EAST GOSFORD
EDUCATION	STAR OF THE SEA SCHOOL - TERRIGAL
EDUCATION	THE ANGLICAN CHURCH
EDUCATION	UNITING CHURCH
EDUCATION	CCAS ADMINISTRATION REFURB
EDUCATION	FULTON INFRASTRUCTURE COLLEGE - FIJI
EDUCATION	FULTON MAIN CLASSROOM BLOCK - FIJI
ENTERTAINMENT	GOSFORD RACE CLUB ALTERATIONS MEMBERS STAND
ENTERTAINMENT	GOSFORD RACE CLUB PANAROMA STAND
ENTERTAINMENT	GOSFORD RACECOURSE ROAD STABLES
ENTERTAINMENT	EMPIRE BAY TAVERN
ENTERTAINMENT	EMPIRE BAY TAVERN COMPLEX
FOOD PROCESSING	GOSFORD ABATTOIRS – NEW CATTLE & SHEEP HOLDING
FOOD PROCESSING	GOSFORD ABATTOIRS – NEW EXPORT BONING & PACKING
FOOD PROCESSING	GOSFORD ABATTOIRS – NEW STRUCTURAL CONCRETE BUILD
FOOD PROCESSING	GOSFORD MEATS – COLD STORE
FOOD PROCESSING	GOSFORD MEATS – GARAGE & DRAINS
FOOD PROCESSING	GOSFORD MEATS – NO. 4 CHILLER
FOOD PROCESSING	HEXHAM OAK MILK FACTORY REDEVELOPMENT
FOOD PROCESSING	SANITARIUM MILL ROOM
FOOD PROCESSING	SANITARIUM "PROMISED LAND" PROJECT
FOOD PROCESSING	BLOCKWORK HOB TO FROZEN FOOD
FOOD PROCESSING	SANITARIUM "CASINO" PROJECT
FOOD PROCESSING	SANITARIUM RECYCLED WATER PROJECT
FOOD PROCESSING	SANITARIUM ROLLER DOOR INSTALL
FOOD PROCESSING	SANITARIUM COCOA/SUGAR ROOM
FOOD PROCESSING	SANITARIUM STORAGE TANK FACILITIES
FOOD PROCESSING	SANITARIUM PAA STORAGE SHED
FOOD PROCESSING	SANITARIUM PALLET STORAGE AREA
FOOD PROCESSING	SANITARIUM PRODUCTION FACILITIES FIRE TUNNEL
FOOD PROCESSING	SANITARIUM ELECTRICAL SWITCHROOM
FOOD PROCESSING	SANITARIUM CEREALS WORKS
FOOD PROCESSING	SANITARIUM CONCRETE PLINTH MILL
FOOD PROCESSING	SANITARIUM WEST AIRLOCK WORKS
FOOD PROCESSING	SANITARIUM PREBATCHING FACILITY WORKS
FOOD PROCESSING	SANITARIUM PNB ROASTING BUILDING
FOOD PROCESSING	SANITARIUM PNB PALLET BUILDING
FOOD PROCESSING	SANITARIUM ELECTRICAL DISTRIBUTION FACILITIES
FOOD PROCESSING	SANITARIUM SILO SUBSTRUCTURE
FOOD PROCESSING	SANITARIUM HOPPER FOOTINGS
FOOD PROCESSING	WARNERVALE SANITARIUM DEVELOPMENT INSTITUTE
FOOD PROCESSING	BEVERAGES OFFICE - FOOTINGS
FOOD PROCESSING	DOCK LEVELLER REMEDIATION WORK
FOOD PROCESSING	SANITARIUM BEVERAGES OFFICES
FOOD PROCESSING	BEV. WASH STATION/MINOR WORKS
FOOD PROCESSING	WYONG ABATTOIRS – EXTENSIONS TO CHILLER & OFFICE
FOOD PROCESSING	WYONG ABATTOIRS – STRUCTURAL STEEL ROOF FOR TRUCK
GOVERNMENT	AMBULANCE STATION
GOVERNMENT	ANSETT-AEROSPACE FLYING COLLEGE – TAMWORTH
GOVERNMENT	ASHFIELD HIGH - 3 STOREY BLOCK INCL SCIENCE LABS
GOVERNMENT	AVONDALE COLLEGE CHEMISTRY BUILDING
GOVERNMENT	WOY WOY POST OFFICE
GOVERNMENT	AVONDALE COLLEGE CHURCH
GOVERNMENT	BANORA POINT PUBLIC SCHOOL
GOVERNMENT	BINGARA PUBLIC SCHOOL
GOVERNMENT	CENTAUR PRIMARY/HIGH SCHOOL

Expression of Interest

GOVERNMENT	CENTRAL COAST GRAMMAR TECHNICS BUILDING
GOVERNMENT	CESSNOCK TECHNICAL COLLEGE - EXTENSIONS
GOVERNMENT	DEPARTMENT OF SOCIAL SECURITY OFFICES – VARIOUS SITES
GOVERNMENT	ERINA HIGH SCHOOL - MULTI-PURPOSE CENTRE
GOVERNMENT	BRISBANE WATER COUNTY COUNCIL ADMIN BUILDING
GOVERNMENT	FAIRHAVEN SCHOOL
GOVERNMENT	FORSTER HIGH SCHOOL - STAGE 1
GOVERNMENT	GALSTON HIGH SCHOOL
GOVERNMENT	GOROKAN HIGH SCHOOL
GOVERNMENT	GOROKAN PUBLIC SCHOOL - STAGE 1
GOVERNMENT	GOROKAN PUBLIC SCHOOL - STAGE 2
GOVERNMENT	GOSFORD TECHNICAL COLLEGE - STAGE 1
GOVERNMENT	GOSFORD TECHNICAL COLLEGE - STAGE 2
GOVERNMENT	GOSFORD TECHNICAL COLLEGE ACCESS CENTRE - STAGE 3
GOVERNMENT	GREYSTANES SCHOOL
GOVERNMENT	GPS RELOCATION – STAGE 1
GOVERNMENT	Homebush Boys High School
GOVERNMENT	HOUSING COMMISSION OFFICE BUILDING
GOVERNMENT	IRRAWANG PUBLIC SCHOOL
GOVERNMENT	KANWAL PUBLIC SCHOOL - STAGE 2
GOVERNMENT	KANWAL PUBLIC SCHOOL - STAGE 3
GOVERNMENT	KIBBLE PARK TEA ROOMS INTERNAL FITOUT " PARKSIDE"
GOVERNMENT	KOTARA HIGH SCHOOL - BLOCK A ROOF RESTORATION
GOVERNMENT	KOTARA HIGH SCHOOL - BLOCK E ROOF RESTORATION
GOVERNMENT	LADIES CHAPEL AVONDALE COLLEGE COORANBONG
GOVERNMENT	LAYCOCK STREET THEATRE – STAGE 1
GOVERNMENT	MAIL SORTING & DISTRIBUTION CENTRE – LONG JETTY
GOVERNMENT	MANILLA HIGH SCHOOL
GOVERNMENT	MERRIWA HOSPITAL
GOVERNMENT	MOOREBANK PUBLIC SCHOOL
GOVERNMENT	MORISSET HIGH SCHOOL - ALTERATIONS AND ADDITIONS
GOVERNMENT	MT PENANG HIGH SECURITY UNIT
GOVERNMENT	MUSWELROOK TAFE
GOVERNMENT	NEW LADIES RESIDENCE AVONDALE COLLEGE - 5 LEVELS
GOVERNMENT	NORTHLAKES HIGH SCHOOL
GOVERNMENT	NUWARRA PUBLIC SCHOOL
GOVERNMENT	ORANA COLLEGE OF TAFE - ACCESS CENTRE
GOVERNMENT	OTTO WASTE PTY LTD
GOVERNMENT	OURIMBAH TERTIARY EDUCATION PRECINCT - STAGE 1
GOVERNMENT	POINT CLARE PUBLIC SCHOOL
GOVERNMENT	PORT MACQUARIE COLLEGE OF TAFE
GOVERNMENT	UMINA BEACH PCYC FITOUT
GOVERNMENT	WOY WOY LIBRARY
GOVERNMENT	WEIGHBRIDGE & GATEHOUSE WOYWOY
GOVERNMENT	GATEWAY TOURIST CENTRE
GOVERNMENT	ST MATTHEWS CARPARK WORKS
GOVERNMENT	MUSWELROOK TAFE
GOVERNMENT	ENTRANCE ELECTORATE OFFICE
GOVERNMENT	REDFIELD PRIVATE BOYS COLLEGE
GOVERNMENT	SINGLETON HIGH SCHOOL
GOVERNMENT	SOUTHERN CROSS HIGH SCHOOL STAGE 1
GOVERNMENT	ST EDWARDS COLLEGE EXTENSION 4 STOREY CLASSROOM BL
GOVERNMENT	ST EDWARDS COLLEGE MULTI-PURPOSE HALL
GOVERNMENT	ST HELLIERS CORRECTIVE CENTRE
GOVERNMENT	STUARTS POINT CONVENTION CENTRE
GOVERNMENT	SYDNEY ADVENTIST COLLEGE LIBRARY RESOURCES CENTRE
GOVERNMENT	TAMWORTH COLLEGE OF TAFE
GOVERNMENT	TANGARA GIRLS SCHOOL
GOVERNMENT	TERRIGAL HIGH SCHOOL
GOVERNMENT	THE ENTRANCE HIGH SCHOOL - AUDITORIUM
GOVERNMENT	THE ENTRANCE HIGH SCHOOL STAGE 1 BLOCKS A B & C
GOVERNMENT	TOUKLEY SENIOR CITIZENS CLUB
GOVERNMENT	UMINA HIGH SCHOOL

Expression of Interest

GOVERNMENT	STUDENT UNION BUILDING - UNIVERSITY OF NEWCASTLE
GOVERNMENT	VALLEY VIEW PUBLIC SCHOOL
GOVERNMENT	WOY WOY HIGH SCHOOL ADMINISTRATION & CLASSROOM
GOVERNMENT	WOY WOY LIBRARY
GOVERNMENT	WOY WOY SOUTH PUBLIC SCHOOL
GOVERNMENT	WYOMING PUBLIC SCHOOL - STAGE 2
GOVERNMENT	WYONG CIVIC CENTRE – STAGE 1
GOVERNMENT	WYONG MEMORIAL HALL
GOVERNMENT	WYONG TECHNICAL COLLEGE - STAGE 1
HEALTHCARE	ADAMSTOWN PATHOLOGY CENTRE FITOUT
HEALTHCARE	AVONDALE HOSPITAL MORTUARY ALTERATIONS AND ADDITIO
HEALTHCARE	BLACKTOWN RADIOLOGY
HEALTHCARE	BRISBANE WATER PRIVATE HOSPITAL
HEALTHCARE	CANBERRA RADIOLOGY CENTRE FITOUT
HEALTHCARE	C T SCANNING UNIT - SEVENTH DAY ADVENTIST HOSPITAL
HEALTHCARE	CASTLE HILL NUCLEAR MEDICINE
HEALTHCARE	CASTLE HILL RADIOLOGY CENTRE FITOUT
HEALTHCARE	CENTRAL COAST RADIOLOGY – ERINA
HEALTHCARE	CENTRAL COAST RADIOLOGY – TOUKLEY
HEALTHCARE	CENTRAL COAST RADIOLOGY – LONG JETTY
HEALTHCARE	CENTRAL COAST RADIOLOGY – FOUNTAIN PLAZA
HEALTHCARE	DATA CENTRE SEVENTH DAY ADVENTIST HOSPITAL
HEALTHCARE	DEE WHY RADIOLOGY FITOUT
HEALTHCARE	SEVENTH DAY ADVENTIST HOSPITAL – EXPANSION
HEALTHCARE	SEVENTH DAY ADVENTIST HOSPI – NEW BUILD
HEALTHCARE	GOSFORD NUCLEAR MEDICINE CENTRE FITOUT
HEALTHCARE	GOSFORD PATHOLOGY CENTRE FITOUT
HEALTHCARE	HORNSBY RADIOLOGY CENTRE FITOUT
HEALTHCARE	LAKE MACQUARIE MEDICAL CENTRE FITOUT
HEALTHCARE	MEDICAL CENTRE – TOUKLEY
HEALTHCARE	MEDICAL CENTRE – WYONG
HEALTHCARE	MEDICAL CENTRE - GOSFORD
HEALTHCARE	MEDICAL RECORDS ROOM SEVENTH DAY ADVENTIST HOSPITA
HEALTHCARE	PALMDALE CREMATORIUM
HEALTHCARE	PHARMACY CLEAN ROOM SEVENTH DAY ADVENTIST HOSPITAL
HEALTHCARE	PITTWATER RADIOLOGY
HEALTHCARE	COASTWIDE FAMILY DAY CARE
HEALTHCARE	VETERINARY HOSPITAL
HEALTHCARE	RYDE/EASTWOOD MEDICAL CENTRE FITOUT
HEALTHCARE	SIMBIRLEE ARCADE AND FLATS
HEALTHCARE	TUGGERANONG MEDICAL CENTRE FITOUT
HEALTHCARE	UMINA X-RAY UNIT
HEALTHCARE	WYONG PHARMACY
HOSPITALITY	ADVENTIST ALPINE VILLAGE
HOSPITALITY	EXTENSION OF "THE WILLOWS" MOTOR INN - STAGE 2
HOSPITALITY	EXTENSIONS OF CLAN MOTEL
HOSPITALITY	FLORIDA - INTERNAL WORKS
HOSPITALITY	GRAND HOTEL REFURBISHMENT & DRIVE THROUGH BOTTLE S
HOSPITALITY	LAKE KEEPIT CABINS
HOSPITALITY	LIQUOR STORE - DRIVE IN BOTTLE SHOP
HOSPITALITY	PEPPERS PIER RESORT 132 UNITS
HOSPITALITY	ELANORA HOTEL EXTENSIONS
HOSPITALITY	ELANORA EXTENSIONS STAGE 2
HOSPITALITY	RSL GALAXY MOTEL
HOSPITALITY	STUARTS POINT CONVENTION CENTRE
HOSPITALITY	THE WILLOWS" MOTOR INN - STAGE 1
HOSPITALITY	WYOMING HOTEL "THE GRANGE"
LARGE FORMAT RETAIL	HARVEY NORMAN SHOWROOM & WAREHOUSE
LARGE FORMAT RETAIL	HUDSON'S TIMBER AND HARDWARE – WEST GOSFORD
LARGE FORMAT RETAIL	JOYCE MAINE STORE – WEST GOSFORD
LARGE FORMAT RETAIL	MASTERS CONVERSION TO BUNNINGS - ALBION PARK
LARGE FORMAT RETAIL	MASTERS CONVERSION TO BUNNINGS - GREGORY HILLS
LARGE FORMAT RETAIL	HARVEY NORMAN CAFE - ERINA

Expression of Interest

LARGE FORMAT RETAIL	BUNNINGS WAREHOUSE UMINA BEACH
LARGE FORMAT RETAIL	BUNNINGS WEST GOSFORD
LARGE FORMAT RETAIL	BUNNINGS TUGGERAH - ALTERATIONS & ADDITIONS
LARGE FORMAT RETAIL	BUNNINGS ADDITIONAL HALE FANS
LARGE FORMAT RETAIL	BUNNINGS EASTGARDENS
LARGE FORMAT RETAIL	BUNNING TUGGERAH CARPARK
LARGE FORMAT RETAIL	BUNNINGS LAKE HAVEN
LARGE FORMAT RETAIL	PYLON RELOCATION BWH E/GARDENS
LARGE FORMAT RETAIL	HOME @ TUGGERAH
LARGE FORMAT RETAIL	BELROSE SUPER CENTRE
LARGE FORMAT RETAIL	TUGGERAH SUPER CENTRE ALTERATIONS & ADDITIONS
MANUFACTURING	ALBANY INTERNATIONAL
MANUFACTURING	BORAL PETROL SERVICE STATION
MANUFACTURING	EMECO SERVICE STATION
MANUFACTURING	FALKS AUSTRALIA ELECTRICAL SHOWROOM & WAREHOUSE
MANUFACTURING	REFURBISHMENT ADMIN BUILDING BAYER AUSTRALIA
MANUFACTURING	SYLVANIA LIGHTING
MANUFACTURING	TETRA PAK (AUST) PTY LTD OFFICES & FACTORY
MANUFACTURING	VALVECO
NOT FOR PROFIT	12 UNITS FOR LEGACY WAR WIDOWS
NOT FOR PROFIT	GOSFORD SEA SCOUTS
NOT FOR PROFIT	UNITS FOR ST VINCENT DE PAUL
RETAIL COMPLEX	CESSNOCK PLAZA REFURBISHMENT
RETAIL COMPLEX	COFFS HARBOUR SHOPPING CENTRE
RETAIL COMPLEX	COMMERCIAL & INDUSTRIAL DEVELOPMENT
RETAIL COMPLEX	IMPERIAL SHOPPING CENTRE REFURBISHMENT, FACADE UPGRADE & RECTIFICATION
RETAIL COMPLEX	PENINSULA PLAZA
RETAIL COMPLEX	TUGGERAH SUPER CENTRE
RETAIL COMPLEX	IMPERIAL LEVEL 2 KIOSKS
RETAIL COMPLEX	IMPERIAL CENTRE LOADING DOCK
RETAIL COMPLEX	SHOPPING COMPLEX - JEDDA'S HOLDINGS
RETAIL	APARTMENTS RETAIL & COMMERCIAL
RETAIL	DRIVE-IN BOTTLE SHOP – SUMMERLAND POINT
RETAIL	SQUASH CENTRE – ERINA
RETAIL	HCF MEDICAL BUILDING
RETAIL	LANTERN PALACE MOTEL – FORRESTERS BEACH
RETAIL	MICHAEL PARKER LIGHTING – ERINA
RETAIL	NEW MENSWEAR SHOP - "LITTLES" – GOSFORD
RETAIL	FLIGHTCENTRE – ERINA
RETAIL	THE ENTRANCE ARCADE
RETAIL	TWO LEVEL RETAIL COMPLEX
RETAIL	WOOLWORTHS SHOPPING PLAZA – GOSFORD
RETAIL	WOOLWORTHS SHOPPING PLAZA - CESSNOCK
RETAIL	WOY WOY CAR WASH
UTILITIES	AVOCA BEACH TELEPHONE EXCHANGE
UTILITIES	GOSFORD TRANSLATOR STATION
UTILITIES	LP GAS BULK DEPOT & RETAIL SERVICES CENTRE
UTILITIES	LPG FACTORY
UTILITIES	LPG STORAGE TERMINAL
UTILITIES	MURPHY'S BAY
UTILITIES	NORAVILLE SUB STATION
UTILITIES	SWITCHROOM EXTENSION DESIGN – CENTRAL COAST
UTILITIES	SWITCHROOM EXTENSION & KIOSK – CENTRAL COAST
UTILITIES	INDUSTRIAL SUBDIVISION – BERKELEY VALE
UTILITIES	THE SYDNEY COUNTY COUNCIL DEPOT – CENTRAL COAST
UTILITIES	TUGGERAH 300KV & SUB STATION
UTILITIES	WEST GOSFORD 300KV & SUB STATION



Contact Information

Pluim Commercial Contractors Pty Ltd
ABN 32 002 779 893

21 Jusfrute Drive
PO Box 6146

Tel: 02 4324 7588

www.pluim.com
enquiry@pluim.com